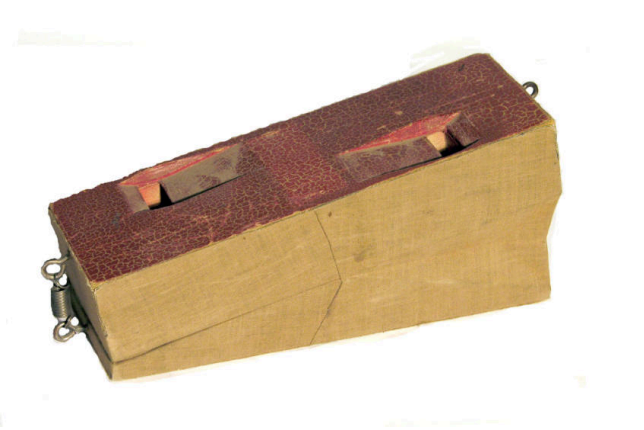


Basic Detail Report



Pump whistle

Date
mid 20th Century

Primary Maker
Gustave Baumann

Medium
Cut and carved wood with paint, fabric and metal

Description

A foot or hand bellows type whistle of wood core painted red and sections joined by fabric to form the bellows, two opening slits for whistle, metal spring and eye hooks

Dimensions

3 1/2 x 8 3/4 x 2 3/4 in. (8.9 x 22.2 x 7 cm)