

Basic Report



Title: 4-H Members Give Their Club Pledge, Pie Town, New Mexico

Date: June 1940 (printed 1990)

Primary Maker: Russell Lee
Medium: Gelatin silver print



Title: At The Community Sing, Pie Town, New Mexico

Date: June 1940 (printed 1990)

Primary Maker: Russell Lee
Medium: Gelatin silver print



Title: Bean Day Rodeo (Wagon Mound, New Mexico)

Date: 1939 (printed 1990)

Primary Maker: Russell Lee
Medium: Gelatin silver print



Title: Bean Day Rodeo (Wagon Mound, New Mexico)

Date: 1940 (printed 1990)

Primary Maker: Russell Lee
Medium: Gelatin silver print



Title: Cafe (Pie Town, NM)

Date: 1940 (printed 1990)

Primary Maker: Russell Lee
Medium: Gelatin silver print



Title: Chamisal, New Mexico

Date: 1940 (printed 1990)

Primary Maker: Russell Lee
Medium: Gelatin silver print



Title: Chamisal, New Mexico

Date: 1940 (printed 1990)

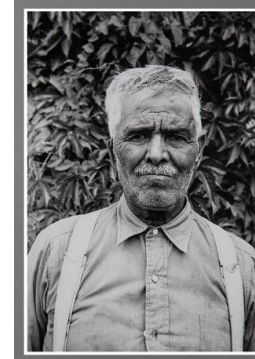
Primary Maker: Russell Lee
Medium: Gelatin silver print



Title: Chamisal, New Mexico

Date: 1940 (printed 1990)

Primary Maker: Russell Lee
Medium: Gelatin silver print



Title: Chamisal, New Mexico

Date: 1940 (printed 1990)

Primary Maker: Russell Lee
Medium: Gelatin silver print



Title: Chamisal, New Mexico

Date: 1940 (printed 1990)

Primary Maker: Russell Lee

Medium: Gelatin silver print



Title: Chamisal, New Mexico

Date: 1940 (printed 1990)

Primary Maker: Russell Lee

Medium: Gelatin silver print

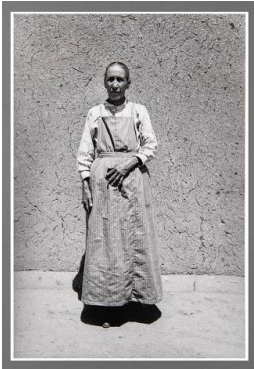


Title: Chamisal, New Mexico

Date: 1940 (printed 1990)

Primary Maker: Russell Lee

Medium: Gelatin silver print

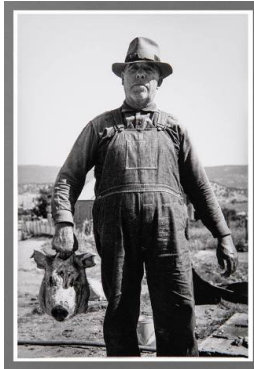


Title: Chamisal, New Mexico

Date: 1940 (printed 1990)

Primary Maker: Russell Lee

Medium: Gelatin silver print



Title: Chamisal, New Mexico

Date: 1940 (printed 1990)

Primary Maker: Russell Lee

Medium: Gelatin silver print



Title: Chamisal, New Mexico

Date: 1940 (printed 1990)

Primary Maker: Russell Lee

Medium: Gelatin silver print

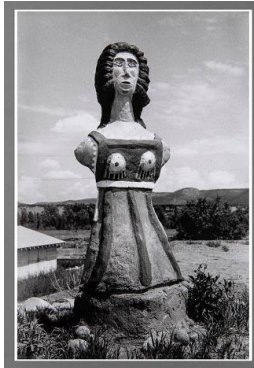


Title: Chamisal, New Mexico

Date: 1940 (printed 1990)

Primary Maker: Russell Lee

Medium: Gelatin silver print



Title: Cimarron, New Mexico

Date: August 1939 (printed 1990)

Primary Maker: Russell Lee

Medium: Gelatin silver print



Title: Clown Rider With His Trick Mule At Rodeo, Quemado, New Mexico

Date: June 1940 (printed 1990)

Primary Maker: Russell Lee

Medium: Gelatin silver print



Title: Costilla, New Mexico
Date: 1940 (printed 1990)
Primary Maker: Russell Lee
Medium: Gelatin silver print



Title: Cowboy with Spanish Cow Pony, Pie Town, New Mexico
Date: 1939 (printed 1990)
Primary Maker: Russell Lee
Medium: Gelatin silver print



Title: Dancers At A Square Dance, Pie Town, New Mexico
Date: June 1940 (printed 1990)
Primary Maker: Russell Lee
Medium: Gelatin silver print



Title: Datil, New Mexico
Date: 1940 (printed 1990)
Primary Maker: Russell Lee
Medium: Gelatin silver print



Title: Farmer and Wife Drilling a Water Well - Pie Town, New Mexico
Date: 1939 (printed 1990)
Primary Maker: Russell Lee
Medium: Gelatin silver print



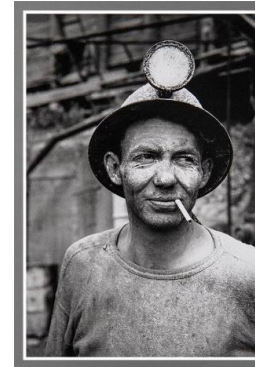
Title: Farm Family After Evening Meal, Pie Town, New Mexico
Date: October 1940 (printed 1990)
Primary Maker: Russell Lee
Medium: Gelatin silver print



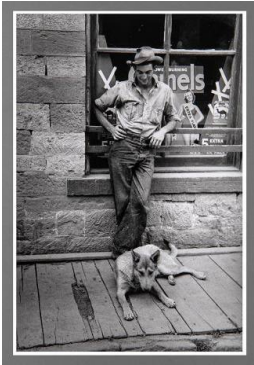
Title: Farm Folks at Dinner During All Day Community Sing - Pie Town, New Mexico
Date: 1940 (printed 1990)
Primary Maker: Russell Lee
Medium: Gelatin silver print



Title: General View of Plastering an Adobe House, New Mexico
Date: July 1940
Primary Maker: Russell Lee
Medium: Gelatin silver print



Title: Gold Miner at End of a Day's Work - Mogollon, New Mexico
Date: 1940 (printed 1990)
Primary Maker: Russell Lee
Medium: Gelatin silver print



Title: Gold Miner With His Dog, Mogollon, New Mexico

Date: June 1940 (printed 1990)

Primary Maker: Russell Lee
Medium: Gelatin silver print



Title: A Group Of Singers From Quemado Who Are Competing For The Catron County Championship At The Pie Town, New Mexico, Singing Convention

Date: June 1940 (printed 1990)

Primary Maker: Russell Lee
Medium: Gelatin silver print



Title: Hobbs, New Mexico

Date: 1940 (printed 1990)

Primary Maker: Russell Lee
Medium: Gelatin silver print



Title: Hobbs, New Mexico

Date: 1940 (printed 1990)

Primary Maker: Russell Lee
Medium: Gelatin silver print



Title: Hobbs, New Mexico

Date: 1940 (printed 1990)

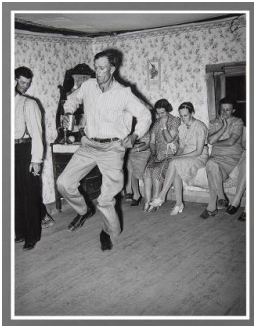
Primary Maker: Russell Lee
Medium: Gelatin silver print



Title: Holman, New Mexico

Date: 1940 (printed 1990)

Primary Maker: Russell Lee
Medium: Gelatin silver print



Title: Jigger At The Square Dance, Pie Town, New Mexico

Date: June 1940 (printed 1990)

Primary Maker: Russell Lee
Medium: Gelatin silver print



Title: Mailboxes In Catron County, New Mexico

Date: April 1940 (printed 1990)

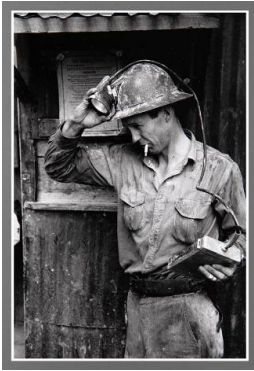
Primary Maker: Russell Lee
Medium: Gelatin silver print



Title: Main Street, Pie Town, New Mexico

Date: October 1940

Primary Maker: Russell Lee
Medium: Dye transfer print



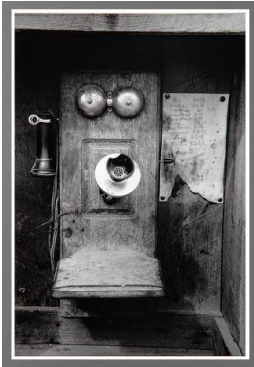
Title: Mogollon, New Mexico
Date: 1940 (printed 1990)
Primary Maker: Russell Lee
Medium: Gelatin silver print



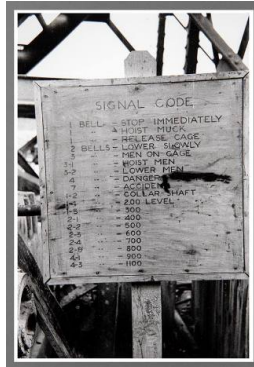
Title: Mogollon, New Mexico
Date: 1940 (printed 1990)
Primary Maker: Russell Lee
Medium: Gelatin silver print



Title: Mogollon, New Mexico
Date: 1940 (printed 1990)
Primary Maker: Russell Lee
Medium: Gelatin silver print



Title: Mogollon, New Mexico
Date: 1940 (printed 1990)
Primary Maker: Russell Lee
Medium: Gelatin silver print



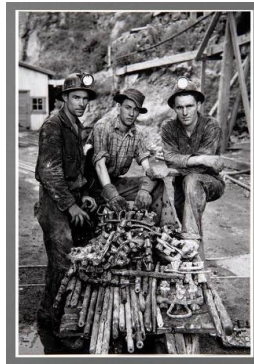
Title: Mogollon, New Mexico
Date: 1940 (printed 1990)
Primary Maker: Russell Lee
Medium: Gelatin silver print



Title: Mogollon, New Mexico
Date: 1940 (printed 1990)
Primary Maker: Russell Lee
Medium: Gelatin silver print



Title: Mogollon, New Mexico
Date: 1940 (printed 1990)
Primary Maker: Russell Lee
Medium: Gelatin silver print



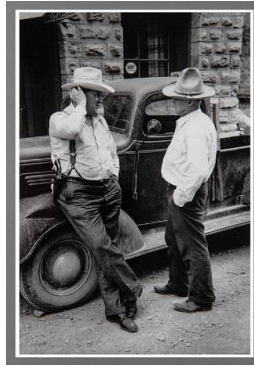
Title: Mogollon, New Mexico
Date: 1940 (printed 1990)
Primary Maker: Russell Lee
Medium: Gelatin silver print



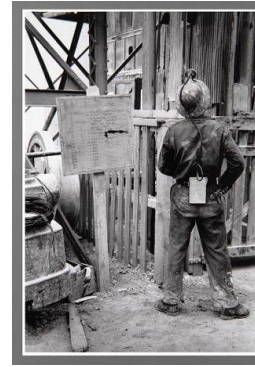
Title: Mogollon, New Mexico
Date: 1940 (printed 1990)
Primary Maker: Russell Lee
Medium: Gelatin silver print



Title: Mogollon, New Mexico
Date: 1940 (printed 1990)
Primary Maker: Russell Lee
Medium: Gelatin silver print



Title: Mogollon, New Mexico
Date: 1940 (printed 1990)
Primary Maker: Russell Lee
Medium: Gelatin silver print



Title: Mogollon, New Mexico
Date: 1940 (printed 1990)
Primary Maker: Russell Lee
Medium: Gelatin silver print



Title: Mogollon, New Mexico
Date: 1940 (printed 1990)
Primary Maker: Russell Lee
Medium: Gelatin silver print



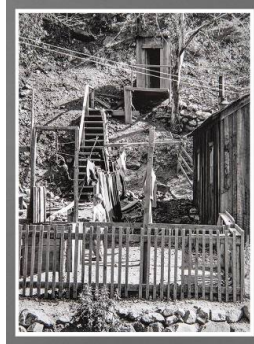
Title: Mogollon, New Mexico
Date: 1940 (printed 1990)
Primary Maker: Russell Lee
Medium: Gelatin silver print



Title: Mogollon, New Mexico
Date: 1940 (printed 1990)
Primary Maker: Russell Lee
Medium: Gelatin silver print



Title: Mogollon, New Mexico
Date: 1940 (printed 1990)
Primary Maker: Russell Lee
Medium: Gelatin silver print



Title: Mogollon, New Mexico
Date: 1940 (printed 1990)
Primary Maker: Russell Lee
Medium: Gelatin silver print



Title: Mogollon, New Mexico
Date: 1940 (printed 1990)
Primary Maker: Russell Lee
Medium: Gelatin silver print



Title: Mogollon, New Mexico
Date: 1940 (printed 1990)
Primary Maker: Russell Lee
Medium: Gelatin silver print



Title: Mogollon, New Mexico
Date: 1940 (printed 1990)
Primary Maker: Russell Lee
Medium: Gelatin silver print



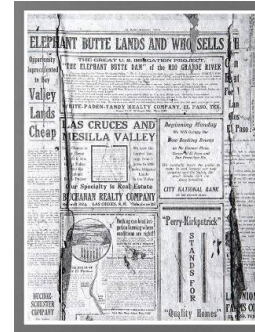
Title: Mogollon, New Mexico
Date: 1940 (printed 1990)
Primary Maker: Russell Lee
Medium: Gelatin silver print



Title: Mora, New Mexico, Spanish American Residents
Date: 1939 (printed 1990)
Primary Maker: Russell Lee
Medium: Gelatin silver print



Title: Musicians At A Square Dance, Pie Town, New Mexico
Date: June 1940 (printed 1990)
Primary Maker: Russell Lee
Medium: Gelatin silver print



Title: Old Copy of El Paso Morning Times, About 1914, Describing Advantages Of Elephant Butte Dam Project And Agricultural Possibilities Of Las Cruces And Mesilla Valley Under Irrigation. The Paper Was Found On The Walls Of An Abandoned House At Georgetown, New Mexico
Date: May 1940 (printed 1990)
Primary Maker: Russell Lee
Medium: Gelatin silver print



Title: On the Front Steps (Pie Town, New Mexico)
Date: 1940 (printed 1990)
Primary Maker: Russell Lee
Medium: Gelatin silver print



Title: Peñasco, New Mexico
Date: July 1940 (printed 1990)
Primary Maker: Russell Lee
Medium: Gelatin silver print



Title: Peñasco, New Mexico
Date: July 1940 (printed 1990)
Primary Maker: Russell Lee
Medium: Gelatin silver print



Title: Peñasco, New Mexico
Date: 1940 (printed 1990)
Primary Maker: Russell Lee
Medium: Gelatin silver print



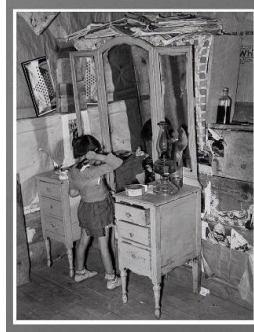
Title: Pie Town, New Mexico
Date: 1940 (printed 1990)
Primary Maker: Russell Lee
Medium: Gelatin silver print



Title: Pie Town, New Mexico
Date: 1940 (printed 1990)
Primary Maker: Russell Lee
Medium: Gelatin silver print



Title: Pie Town, New Mexico
Date: 1940 (printed 1990)
Primary Maker: Russell Lee
Medium: Gelatin silver print



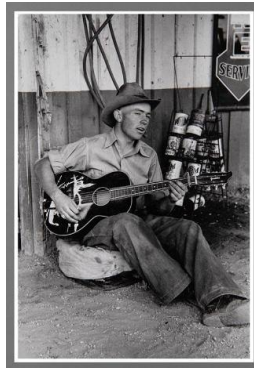
Title: Pie Town, New Mexico
Date: 1940 (printed 1990)
Primary Maker: Russell Lee
Medium: Gelatin silver print



Title: Pie Town, New Mexico
Date: 1939 (printed 1990)
Primary Maker: Russell Lee
Medium: Gelatin silver print



Title: Pie Town, New Mexico
Date: 1939 (printed 1990)
Primary Maker: Russell Lee
Medium: Gelatin silver print



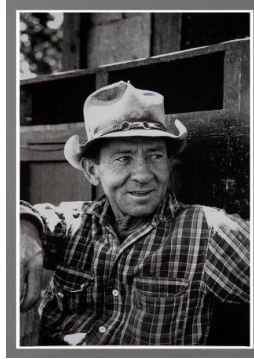
Title: Pie Town, New Mexico
Date: 1940 (printed 1990)
Primary Maker: Russell Lee
Medium: Gelatin silver print



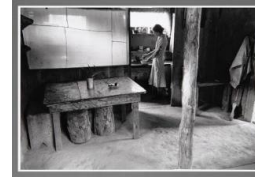
Title: Pie Town, New Mexico
Date: 1939 (printed 1990)
Primary Maker: Russell Lee
Medium: Gelatin silver print



Title: Pie Town, New Mexico
Date: 1939 (printed 1990)
Primary Maker: Russell Lee
Medium: Gelatin silver print



Title: Pie Town, New Mexico
Date: 1939 (printed 1990)
Primary Maker: Russell Lee
Medium: Gelatin silver print



Title: Pie Town, New Mexico
Date: 1939 (printed 1990)
Primary Maker: Russell Lee
Medium: Gelatin silver print



Title: Pie Town, New Mexico
Date: 1940 (printed 1990)
Primary Maker: Russell Lee
Medium: Gelatin silver print



Title: Pie Town, New Mexico
Date: 1939 (printed 1990)
Primary Maker: Russell Lee
Medium: Gelatin silver print



Title: Pie Town, New Mexico
Date: 1939 (printed 1990)
Primary Maker: Russell Lee
Medium: Gelatin silver print



Title: Pie Town, New Mexico
Date: 1939 (printed 1990)
Primary Maker: Russell Lee
Medium: Gelatin silver print



Title: Pie Town, New Mexico
Date: 1940 (printed 1990)
Primary Maker: Russell Lee
Medium: Gelatin silver print



Title: Pie Town, New Mexico
Date: 1940 (printed 1990)
Primary Maker: Russell Lee
Medium: Gelatin silver print



Title: Pie Town, New Mexico
Date: 1940 (printed 1990)
Primary Maker: Russell Lee
Medium: Gelatin silver print



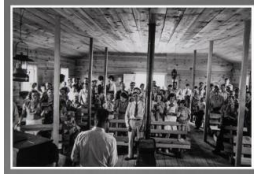
Title: Pie Town, New Mexico
Date: 1940 (printed 1990)
Primary Maker: Russell Lee
Medium: Gelatin silver print



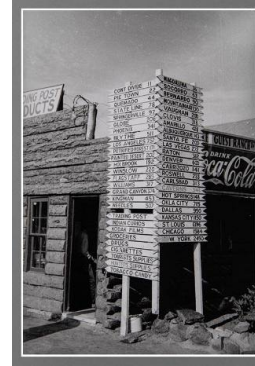
Title: Pie Town, New Mexico
Date: 1940 (printed 1990)
Primary Maker: Russell Lee
Medium: Gelatin silver print



Title: Pie Town, New Mexico
Date: 1940 (printed 1990)
Primary Maker: Russell Lee
Medium: Gelatin silver print



Title: Pie Town, New Mexico
Date: 1940 (printed 1990)
Primary Maker: Russell Lee
Medium: Gelatin silver print



Title: Pie Town, New Mexico
Date: 1940 (printed 1990)
Primary Maker: Russell Lee
Medium: Gelatin silver print



Title: Pie Town, New Mexico
Date: 1940
Primary Maker: Russell Lee
Medium: Gelatin silver print



Title: Pie Town, New Mexico
Date: 1940 (printed 1990)
Primary Maker: Russell Lee
Medium: Gelatin silver print



Title: Pie Town, New Mexico
Date: 1940 (printed 1990)
Primary Maker: Russell Lee
Medium: Gelatin silver print



Title: Pie Town, New Mexico
Date: 1940 (printed 1990)
Primary Maker: Russell Lee
Medium: Gelatin silver print



Title: Pie Town, New Mexico
Date: 1940 (printed 1990)
Primary Maker: Russell Lee
Medium: Gelatin silver print



Title: Pie Town, New Mexico
Date: 1940 (printed 1990)
Primary Maker: Russell Lee
Medium: Gelatin silver print



Title: Pie Town, New Mexico
Date: 1940 (printed 1990)
Primary Maker: Russell Lee
Medium: Gelatin silver print



Title: Pie Town, New Mexico
Date: 1940 (printed 1990)
Primary Maker: Russell Lee
Medium: Gelatin silver print



Title: Pie Town, New Mexico
Date: 1940 (printed 1990)
Primary Maker: Russell Lee
Medium: Gelatin silver print



Title: Pie Town, New Mexico
Date: 1940 (printed 1990)
Primary Maker: Russell Lee
Medium: Gelatin silver print



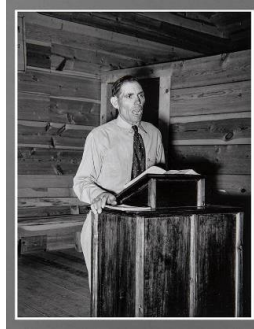
Title: Pie Town, New Mexico
Date: 1940 (printed 1990)
Primary Maker: Russell Lee
Medium: Gelatin silver print



Title: Pie Town, New Mexico
Date: 1940 (printed 1990)
Primary Maker: Russell Lee
Medium: Gelatin silver print



Title: Pie Town, New Mexico
Date: 1940 (printed 1990)
Primary Maker: Russell Lee
Medium: Gelatin silver print



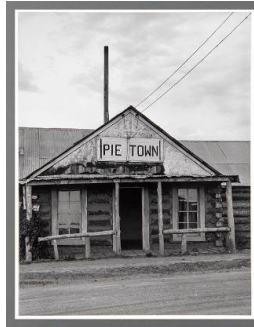
Title: Pie Town, New Mexico
Date: 1940 (printed 1990)
Primary Maker: Russell Lee
Medium: Gelatin silver print



Title: Pie Town, New Mexico
Date: 1940 (printed 1990)
Primary Maker: Russell Lee
Medium: Gelatin silver print



Title: Pie Town, New Mexico
Date: 1940 (printed 1990)
Primary Maker: Russell Lee
Medium: Gelatin silver print



Title: Pie Town, New Mexico
Date: 1940 (printed 1990)
Primary Maker: Russell Lee
Medium: Gelatin silver print



Title: Pie Town, New Mexico
Date: 1940 (printed 1990)
Primary Maker: Russell Lee
Medium: Gelatin silver print



Title: Pie Town, New Mexico
Date: 1940 (printed 1990)
Primary Maker: Russell Lee
Medium: Gelatin silver print



Title: Pie Town, New Mexico
Date: 1940 (printed 1990)
Primary Maker: Russell Lee
Medium: Gelatin silver print



Title: Pie Town, New Mexico
Date: 1940 (printed 1990)
Primary Maker: Russell Lee
Medium: Gelatin silver print



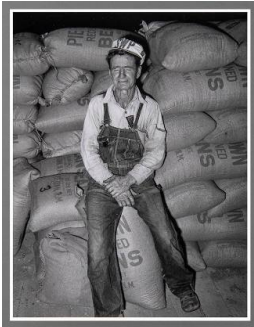
Title: Pie Town, New Mexico
Date: 1940 (printed 1990)
Primary Maker: Russell Lee
Medium: Gelatin silver print



Title: Pie Town, New Mexico
Date: 1940 (printed 1990)
Primary Maker: Russell Lee
Medium: Gelatin silver print



Title: Pie Town, New Mexico
Date: 1940 (printed 1990)
Primary Maker: Russell Lee
Medium: Gelatin silver print



Title: Pie Town, New Mexico
Date: 1940 (printed 1990)
Primary Maker: Russell Lee
Medium: Gelatin silver print



Title: Pie Town, New Mexico
Date: 1940 (printed 1990)
Primary Maker: Russell Lee
Medium: Gelatin silver print



Title: Pie Town, New Mexico
Date: 1940 (printed 1990)
Primary Maker: Russell Lee
Medium: Gelatin silver print



Title: Pie Town, New Mexico
Date: 1940 (printed 1990)
Primary Maker: Russell Lee
Medium: Gelatin silver print



Title: Pie Town, New Mexico
Date: 1940 (printed 1990)
Primary Maker: Russell Lee
Medium: Gelatin silver print



Title: Pie Town, New Mexico. Mrs. George Hutton In Front of Bookcase
Date: 1940 (printed 1990)
Primary Maker: Russell Lee
Medium: Gelatin silver print



Title: Post Office, Amalia, New Mexico

Date: July 1940 (printed 1990)
Primary Maker: Russell Lee
Medium: Gelatin silver print



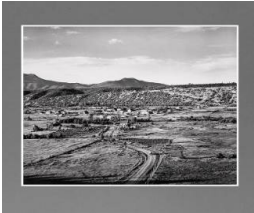
Title: Quick Photos at The Fiesta, Taos, New Mexico

Date: July 1940 (printed 1990)
Primary Maker: Russell Lee
Medium: Gelatin silver print



Title: Rancher's Home, Pie Town, New Mexico

Date: 1940 (printed 1990)
Primary Maker: Russell Lee
Medium: Gelatin silver print



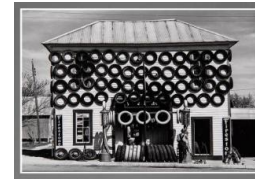
Title: Rodarte, New Mexico

Date: 1940 (printed 1990)
Primary Maker: Russell Lee
Medium: Gelatin silver print



Title: Roman Catholic Church At Isleta, New Mexico

Date: October 1940 (printed 1990)
Primary Maker: Russell Lee
Medium: Gelatin silver print



Title: San Marcos, Texas

Date: 1940 (printed 1990)
Primary Maker: Russell Lee
Medium: Gelatin silver print



Title: San Patricio County, Texas, Entrance to a Farm

Date: 1940 (printed 1990)
Primary Maker: Russell Lee
Medium: Gelatin silver print



Title: Signs In The Oil Town Of Hobbs, New Mexico

Date: March 1940 (printed 1990)
Primary Maker: Russell Lee
Medium: Gelatin silver print



Title: Sliver City, New Mexico

Date: 1940 (printed 1990)
Primary Maker: Russell Lee
Medium: Gelatin silver print



Title: Spanish-American woman hanging up meat to dry. Chamisal, New Mexico
Date: July 1940 (printed 1990)
Primary Maker: Russell Lee
Medium: Gelatin silver print



Title: Spectators at the Polack Brothers Circus Show, Midland, Texas
Date: September 1947
Primary Maker: Russell Lee
Medium: Gelatin silver print



Title: The Stage Which Daily Brings In Mail, Freight, Express And Passengers To Pie Town, New Mexico
Date: June 1940 (printed 1990)
Primary Maker: Russell Lee
Medium: Gelatin silver print



Title: Taos County
Date: 1939 (printed 1990)
Primary Maker: Russell Lee
Medium: Gelatin silver print



Title: Taos County, New Mexico
Date: 1940 (printed 1990)
Primary Maker: Russell Lee
Medium: Gelatin silver print



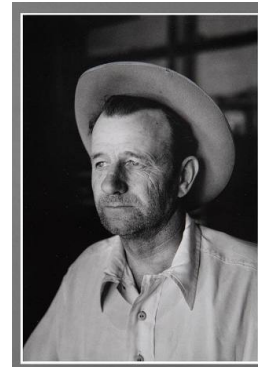
Title: Taos County, New Mexico
Date: 1940 (printed 1990)
Primary Maker: Russell Lee
Medium: Gelatin silver print



Title: Taos County, New Mexico
Date: 1939 (printed 1990)
Primary Maker: Russell Lee
Medium: Gelatin silver print



Title: Taos, New Mexico
Date: 1940 (printed 1990)
Primary Maker: Russell Lee
Medium: Gelatin silver print



Title: Taos, New Mexico
Date: 1940 (printed 1990)
Primary Maker: Russell Lee
Medium: Gelatin silver print



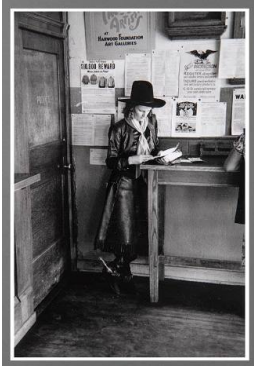
Title: Taos, New Mexico
Date: 1940
Primary Maker: Russell Lee
Medium: Gelatin silver print



**Title: Taos Vicinity:
Sweeping Coals from
Outdoors Oven**
Date: 1939 (printed 1990)
Primary Maker: Russell Lee
Medium: Gelatin silver print



**Title: Untitled (U.S. Mail
Wagon)**
Date: 1940 (printed 1990)
Primary Maker: Russell Lee
Medium: Gelatin silver print



**Title: Visitor To Taos
Fiesta, Taos, New Mexico**
Date: July 1940 (printed 1990)
Primary Maker: Russell Lee
Medium: Gelatin silver print



**Title: Wagon Mound, New
Mexico**
Date: 1939 (printed 1990)
Primary Maker: Russell Lee
Medium: Gelatin silver print



**Title: Wagon Mound, New
Mexico**
Date: 1939 (printed 1990)
Primary Maker: Russell Lee
Medium: Gelatin silver print



**Title: Wagon Mound, New
Mexico**
Date: 1939 (printed 1990)
Primary Maker: Russell Lee
Medium: Gelatin silver print