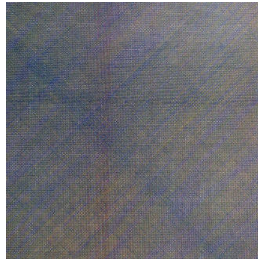


Basic Report



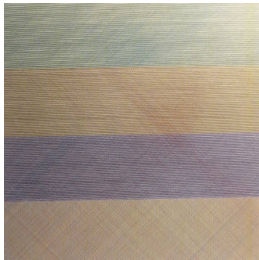
Title: Color Grids. All Vertical and Horizontal Combinations of Black, Yellow, Red and Blue, Straight, Not Straight and Broken Lines
Date: 1977
Primary Maker: Sol LeWitt
Medium: color silkscreen



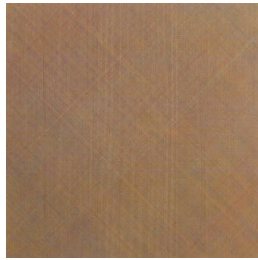
Title: Composite Series
Date: 1970
Primary Maker: Sol LeWitt
Medium: silkscreen



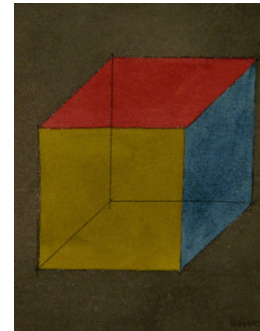
Title: Composite Series, Plate #1
Date: 1970
Primary Maker: Sol LeWitt
Medium: silkscreen



Title: Composite Series, Plate #3
Date: 1970
Primary Maker: Sol LeWitt
Medium: silkscreen



Title: Composite Series, Plate #4
Date: circa 1970
Primary Maker: Sol LeWitt
Medium: silkscreen



Title: Cube
Date: circa 1995
Primary Maker: Sol LeWitt
Medium: gouache on paper

Title: Drawing for "Hockey Stick"
Date: 1964
Primary Maker: Sol LeWitt
Medium: graphite on paper



Title: Horizontal Composite
Date: 1970
Primary Maker: Sol LeWitt
Medium: silkscreen



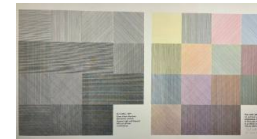
Title: Horizontal Composite
Date: 1970
Primary Maker: Sol LeWitt
Medium: silkscreen



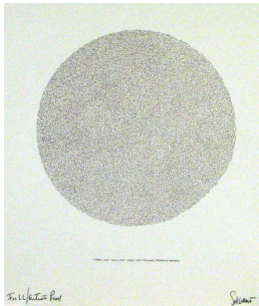
Title: Irregular Form
Date: 1997
Primary Maker: Sol LeWitt
Medium: gouache on paper



Title: Irregular Form
Date: 1997
Primary Maker: Sol LeWitt
Medium: gouache on paper



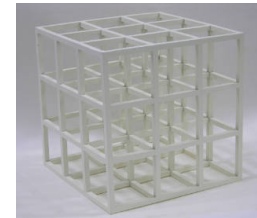
Title: Lines in four directions (horizontal, vertical, diagonal right and diagonal left) and all their combinations and Four colors (yellow, black, red and blue) and all their combinations
Date: 1977
Primary Maker: Sol LeWitt
Medium: silkscreen



Title: Lines, Not Long, Not Heavy, Not Touching, Drawn at Random
Date: 1970
Primary Maker: Sol LeWitt
Medium: lithograph



Title: Lito Paris Watch
Date: 1994
Primary Maker: Sol LeWitt
Medium: leather, glass, metal



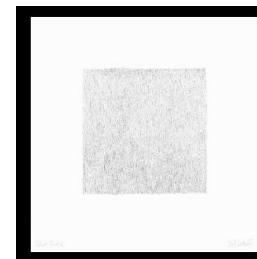
Title: Steel Grid 3 x 3 x 3
Date: 1979
Primary Maker: Sol LeWitt
Medium: baked enamel on steel



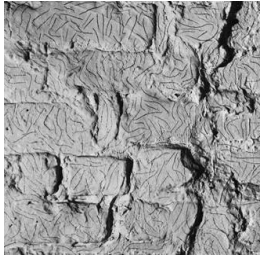
Title: Untitled (print with error)
Primary Maker: Sol LeWitt
Medium: etching



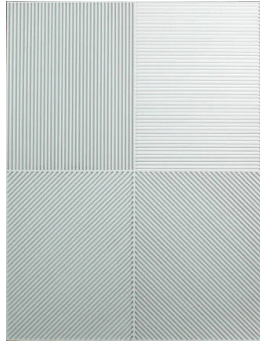
Title: Untitled (Purple)
Date: 2005
Primary Maker: Sol LeWitt
Medium: lithograph with etching aquatint



Title: Vertical Lines, Not Touching
Date: 1970
Primary Maker: Sol LeWitt
Medium: lithograph



Title: Wall Drawing #73:
Lines, not straight, not touching, drawn at random, uniformly dispersed with maximum density, covering the entire surface of the wall.
Date: March 1971
Primary Maker: Sol LeWitt
Medium: black pencil on white wall



Title: Wall Project,
Chicago, Illinois
Date: 1983
Primary Maker: Sol LeWitt
Medium: painted wood relief